



# SOLUTIONS FOR ROOFS

CATALOGUE VERSION 1

MAKING SYSTEMS WORK



**Burgerhout**<sup>®</sup>

a brand of M&G Group

# INDEX

<b>PREFACE</b>	4
----------------	---

## **VENT-ALU VENTS**

Vent-Alu 3000 Flat roof vents	8
Vent-Alu 3000 Pitched roof vents	14
Vent-Alu 2000 Flat roof vents	16
Vents Aluminium welded	20

## **CABLE ENTRIES**

Double-walled cable entries	24
Single-walled cable entries	26

## **ROOF DRAINAGE**

Gully outlets aluminium	30
Offset outlets	34
Leaf guards	34
Roof outlet aluminium	35
Roof outlet aluminium with sleeve	36
Roof outlet aluminium forced	36
Emergency overflows aluminium	37

## **WIND-DRIVEN FANS**

Vent-Alu Rotor PP fans	40
Turbine fans	42
Savonius fans	42
Aspirotor fans	42

**FLUE GAS RENOVATION KITS**

Non-condensing renovation kits	46
Condensing renovation kits	46
Conventional renovation kits	47

**MECHANICAL VENTILATION**

Vent-Alu 3000 ventilation roof terminals	50
Megavent ventilation roof terminals	51
Ventilation roof terminals PP	52
Ventilation roof terminals metal	53
Insulated roof terminals	56
DDVI hood	58
Deflector hood	59

**ADDITIONAL ROOFING PRODUCTS**

Adhesive flashings	62
Rain covers	63
Gutter traps	63
Bird Guard	63

## PREFACE

### BURGERHOUT – AN M&G GROUP BRAND

With a history dating back to 1865, we produce and supply climate control solutions for any dwelling that incorporates a duct in the floor, wall or roof. Our company provides innovative products that enable climate installations and systems to operate, and we collaborate with companies that produce HVAC equipment. With products from our well-established brands Burgerhout, Anjo and Stabile, we provide installers with full-service solutions that ensure a comfortable indoor climate, while avoiding any negative effects regarding the climate outdoors. Our mission is to create a "Sustainable and Comfortable Living Environment for Everyone."

We operate locally by putting people and the environment first and attach a great deal of importance to respect, togetherness, safety & security and drive. With a resourceful team of 800 enthusiastic specialists, our own R&D and testing facilities, production sites in the Netherlands, Italy and Turkey and our own offices in Belgium, France, Italy, the United Kingdom and Germany, our products and services are available in over 25 countries.



### MAKING THE GREEN CONNECTION WITH BURGERHOUT

The solutions we supply under the Burgerhout brand focus primarily on the combination of current conventional heating or ventilation systems and 'green', 'energy-saving' technologies. We are therefore the link that connects the outdoor climate with a comfortable indoor climate, while ensuring circularity and sustainability.



### **INNOVATION IN OUR NEW PRODUCTION FACILITY**

To continue to innovate, with the aim of contributing to a good future for everyone, M&G Group opened a new factory in Assen in 2023. In this ultra-modern production location, the systems can be produced even more economically and sustainably. In this way, M&G Group works towards a better living environment for everyone with future-oriented products.

### **GOT ANY QUESTIONS OR NEED ANY ADVICE?**

You can contact us online for answers to any questions about our products and systems. You can also consult our datasheets and manuals, which are available via our website ([burgerhout.com](https://burgerhout.com)). Do you have any other questions, or do you need training or advice? If so, do not hesitate to contact our experts by email at: [sales.support@mg-group.com](mailto:sales.support@mg-group.com)





MAKING SYSTEMS WORK

---



## VENT-ALU VENTS

Vent-Alu 3000 Flat roof vents

Vent-Alu 3000 Pitched roof vents

Vent-Alu 2000 Flat roof vents

Vents Aluminium welded



**Burgerhout**<sup>®</sup>

a brand of M&G Group

## VENT-ALU 3000 FLAT ROOF VENTS

### A COMPLETE SERIES OF FLAT ROOF VENTS!

The series contains 5 connection diameters with which 10 pipe diameters can be connected air-tight and vapour-tight. The adhesive plates can be modularly extended both below and above the roof with the unique extension elements. The adhesive plates are available in single-walled, double-walled and PVC-coated versions. In addition, the unique series is also available as prefab model with an integrated roundel

roof covering. The double-walled insulated adhesive panels are equipped with flame-retardant and flame-extinguishing EPS insulation.

The Burgerhout Anjo Vent-Alu 3000 is made of reusable metals and plastics and can be completely disassembled. All parts are fully recyclable.

### THE SERIES CONSISTS OF THE FOLLOWING COMPONENTS:

- PP top cover
- Vent-Alu Rotor PP



<< >>



- Double-walled above roof extension piece with sleeve



- Aluminium double-walled adhesive flashing (optional with PVC-coating)
- Double-walled adhesive flashing with prefab flashing



<< >>



- Adhesive flashing for vapour barrier



- Extension piece with sleeve and stepped seal



**DOUBLE-WALLED VENT, INSULATED, WITH PP TOP COVER**

Type	Ø Spigot (mm)	Height above roof (mm)	Spigot length (mm)	Article number
50-60	44 - 57	250	50	42 045 41 05
70-80	67 - 77	255	50	42 045 41 07
90-100	84 - 96	260	50	42 045 41 09
110-125	104 - 118	265	55	42 045 41 11
150-160	142 - 152	280	50	42 045 41 15

**DOUBLE-WALLED VENT, INSULATED, PVC COATED, AND PP TOP COVER**

Type	Ø Spigot (mm)	Height above roof (mm)	Spigot length (mm)	Article number
50-60	44 - 57	250	50	42 047 41 05
70-80	67 - 77	255	50	42 047 41 07
90-100	84 - 96	260	50	42 047 41 09
110-125	104 - 118	265	55	42 047 41 11
150-160	142 - 152	280	50	42 047 41 15

**DOUBLE-WALLED PREFAB VENT, INSULATED, RESITRIX SK W, AND PP TOP COVER**

Type	Ø Spigot (mm)	Height above roof (mm)	Spigot length (mm)	Article number
50-60	44 - 57	250	50	42 042 61 05
70-80	67 - 77	255	50	42 042 61 07
90-100	84 - 96	260	50	42 042 61 09
110-125	104 - 118	265	55	42 042 61 11
150-160	142 - 152	280	50	42 042 61 15

**DOUBLE-WALLED PREFAB VENT, INSULATED, BITUMEN SBS, AND PP TOP COVER**

Type	Ø Spigot (mm)	Height above roof (mm)	Spigot length (mm)	Article number
50-60	44 - 57	250	50	42 042 71 05
70-80	67 - 77	255	50	42 042 71 07
90-100	84 - 96	260	50	42 042 71 09
110-125	104 - 118	265	55	42 042 71 11
150-160	142 - 152	280	50	42 042 71 15

**DOUBLE-WALLED PREFAB VENT, INSULATED, EPDM SA FLASHING USA, AND PP TOP COVER**

Type	Ø Spigot (mm)	Height above roof (mm)	Spigot length (mm)	Article number
50-60	44 - 57	250	50	42 042 81 05
70-80	67 - 77	255	50	42 042 81 07
90-100	84 - 96	260	50	42 042 81 09
110-125	104 - 118	265	55	42 042 81 11
150-160	142 - 152	280	50	42 042 81 15



## VENT-ALU FLAT ROOF VENTS

### DOUBLE-WALLED ADHESIVE FLASHING, INSULATED

Type	Ø Spigot (mm)	Height above roof (mm)	Spigot length (mm)	Article number
50-60	44 - 57	160	50	42 045 43 05
70-80	67 - 77	160	50	42 045 43 07
90-100	84 - 96	160	50	42 045 43 09
110-125	104 - 118	160	55	42 045 43 11
150-160	142 - 152	160	50	42 045 43 15



### DOUBLE-WALLED ADHESIVE FLASHING, INSULATED, PVC COATED

Type	Ø Spigot (mm)	Height above roof (mm)	Spigot length (mm)	Article number
50-60	44 - 57	160	50	42 047 43 05
70-80	67 - 77	160	50	42 047 43 07
90-100	84 - 96	160	50	42 047 43 09
110-125	104 - 118	160	55	42 047 43 11
150-160	142 - 152	160	50	42 047 43 15



### DOUBLE-WALLED PREFAB FLASHING, INSULATED, RESITRIX SK W

Type	Ø Spigot (mm)	Height above roof (mm)	Spigot length (mm)	Article number
50-60	44 - 57	160	50	42 042 63 05
70-80	67 - 77	160	50	42 042 63 07
90-100	84 - 96	160	50	42 042 63 09
110-125	104 - 118	160	55	42 042 63 11
150-160	142 - 152	160	50	42 042 63 15



### DOUBLE-WALLED PREFAB FLASHING, INSULATED, BITUMEN SBS

Type	Ø Spigot (mm)	Height above roof (mm)	Spigot length (mm)	Article number
50-60	44 - 57	160	50	42 042 73 05
70-80	67 - 77	160	50	42 042 73 07
90-100	84 - 96	160	50	42 042 73 09
110-125	104 - 118	160	55	42 042 73 11
150-160	142 - 152	160	50	42 042 73 15



### DOUBLE-WALLED PREFAB FLASHING, INSULATED, EPDM SA FLASHING USA

Type	Ø Spigot (mm)	Height above roof (mm)	Spigot length (mm)	Article number
50-60	44 - 57	160	50	42 042 83 05
70-80	67 - 77	160	50	42 042 83 07
90-100	84 - 96	160	50	42 042 83 09
110-125	104 - 118	160	55	42 042 83 11
150-160	142 - 152	160	50	42 042 83 15



**TOP COVER PP**

Type	Height (mm)	Article number
50-60	120	42 045 44 05
70-80	125	42 045 44 07
90-100	130	42 045 44 09
110-125	135	42 045 44 11
150-160	150	42 045 44 15

**EXTENSION PIECE WITH SLEEVE**

Type	Ø Spigot (mm)	Total length (mm)	Article number
50-60	44 - 57	210	42 045 45 05
70-80	67 - 77	210	42 045 45 07
90-100	84 - 96	210	42 045 45 09
110-125	104 - 118	215	42 045 45 11
150-160	142 - 152	210	42 045 45 15

**DOUBLE-WALLED ABOVE ROOF EXTENSION PIECE WITH SLEEVE**

Type	Effective height above roof (mm)	Article number
50-60	200	42 045 46 05
70-80	200	42 045 46 07
90-100	200	42 045 46 09
110-125	200	42 045 46 11
150-160	200	42 045 46 15

**ADHESIVE FLASHING FOR VAPOUR BARRIER APPLICATIONS INCLUDING SLEEVE**

Type	Ø Spigot (mm)	Ø Top connection (mm)	Height adhesive flashing (mm)	Total length (mm)	Spigot length (mm)	Article number
50-60	44 - 57	50	50	210	50	42 045 55 05
70-80	67 - 77	70	50	210	50	42 045 55 07
90-100	84 - 96	90	50	210	50	42 045 55 09
110-125	104 - 118	110	50	215	55	42 045 55 11
150-160	142 - 152	150	50	210	50	42 045 55 15



## VENT-ALU 3000 FLAT ROOF VENTS

### SINGLE-WALLED VENT WITH PP TOP COVER

Type	Total height (mm)	Article number
50-60	250	42 045 40 05
70-80	255	42 045 40 07
90-100	260	42 045 40 09
110-125	265	42 045 40 11
150-160	280	42 045 40 15



### SINGLE-WALLED VENT, PVC COATED, WITH PP TOP COVER

Type	Total height (mm)	Article number
50-60	250	42 047 40 05
70-80	255	42 047 40 07
90-100	260	42 047 40 09
110-125	265	42 047 40 11
150-160	280	42 047 40 15



### SINGLE-WALLED ADHESIVE FLASHING

Type	Total height (mm)	Article number
50-60	160	42 045 42 05
70-80	160	42 045 42 07
90-100	160	42 045 42 09
110-125	160	42 045 42 11
150-160	160	42 045 42 15



### SINGLE-WALLED ADHESIVE FLASHING, PVC COATED

Type	Total height (mm)	Article number
50-60	160	42 047 42 05
70-80	160	42 047 42 07
90-100	160	42 047 42 09
110-125	160	42 047 42 11
150-160	160	42 047 42 15



**DOUBLE-WALLED VENT, INSULATED, IN ACCORDANCE WITH NEN 1087, WITH PP TOP COVER**

Type	Ø Spigot (mm)	Height above roof (mm)	Spigot length (mm)	Article number
50-60	44 - 57	580	50	42 045 49 05
70-80	67 - 77	585	50	42 045 49 07
90-100	84 - 96	590	50	42 045 49 09
110-125	104 - 118	595	55	42 045 49 11
150-160	142 - 152	600	50	42 045 49 15

**DOUBLE-WALLED SEWER VENT, INSULATED, IN ACCORDANCE WITH NEN 3215**

Type	Ø Spigot (mm)	Height above roof (mm)	Spigot length (mm)	Article number
50-60	44 - 57	360	50	42 045 48 05
70-80	67 - 77	360	50	42 045 48 07
90-100	84 - 96	360	50	42 045 48 09
110-125	104 - 118	360	55	42 045 48 11
150-160	142 - 152	360	50	42 045 48 15

**DOUBLE-WALLED RETENTION ROOF VENT, INSULATED, WITH PP TOP COVER**

Type	Ø Spigot (mm)	Height above roof (mm)	Spigot length (mm)	Article number
50-60	44 - 57	620	50	42 046 01 05
70-80	67 - 77	625	50	42 046 01 07
90-100	84 - 96	630	50	42 046 01 09
110-125	104 - 118	635	55	42 046 01 11
150-160	142 - 152	650	50	42 046 01 15

\* Available in other heights on request

**TOP COVER ALUMINIUM**

Type	Height (mm)	Article number
50-60	85	42 045 54 05
70-80	85	42 045 54 07
90-100	115	42 045 54 09
110-125	115	42 045 54 11
150-160	118	42 045 54 15



## VENT-ALU VENTS

**VENT-ALU 3000 PITCHED ROOF VENTS****DOUBLE-WALLED VENT, INSULATED, WITH PP TOP COVER AND LEADAX FLASHING**

Type	Ø Spigot (mm)	Height above collar (mm)	Roof Angle	Article number
70-80	67 - 77	360	15° - 60°	42 045 67 07
90-100	84 - 96	361	15° - 60°	42 045 67 09
110-125	104 - 118	364	15° - 60°	42 045 67 11

**DOUBLE-WALLED VENT, INSULATED, WITH PP TOP COVER, FOR LEAD TILE**

Type	Ø Spigot (mm)	Height above collar (mm)	Roof angle	Article number
70-80	67 - 77	360	25° - 45°	42 045 57 07
90-100	84 - 96	361	25° - 45°	42 045 57 09
110-125	104 - 118	364	25° - 45°	42 045 57 11

**ROOF TILE (LEAD)**

Type	Article number
F Roof tile standard	40 045 35 47
F Roof tile completely black	40 045 35 46

**DOUBLE-WALLED VENT, INSULATED, WITH PP TOP COVER, ADJUSTABLE**

Type	Ø Spigot (mm)	Height above collar (mm)	Roof angle	Article number
50-60	44 - 57	311	0° - 15°	42 045 56 05
70-80	67 - 77	330	0° - 15°	42 045 56 07
90-100	84 - 96	351	0° - 15°	42 045 56 09
110-125	104 - 118	384	0° - 15°	42 045 56 11
150-160	142 - 152	412	0° - 15°	42 045 56 15



Also available with PVC coating.



## VENT-ALU 2000 FLAT ROOF VENTS

### DOUBLE-WALLED VENT, INSULATED, WITH PP TOP COVER

Type	Height above roof (mm)	Spigot length (mm)	Article number
200	290	50	42 045 91 20
250	290	50	42 045 91 25



### DOUBLE-WALLED VENT, INSULATED, PVC COATED, WITH PP TOP COVER

Type	Height above roof (mm)	Spigot length (mm)	Article number
200	290	50	42 047 91 20
250	290	50	42 047 91 25



### SINGLE-WALLED VENT WITH PP TOP COVER

Type	Total height (mm)	Article number
200	290	42 045 90 20
250	290	42 045 90 25



### SINGLE-WALLED VENT, PVC COATED, WITH PP TOP COVER

Type	Total height (mm)	Article number
200	290	42 047 90 20
250	290	42 047 90 25





## VENT-ALU 2000 FLAT ROOF VENTS

### DOUBLE-WALLED VENT, INSULATED, WITH ALUMINUM TOP COVER

Type	Height above roof (mm)	Spigot length (mm)	Article number
200	235	50	42 045 51 20
250	280	50	42 045 51 25
315	280	50	42 045 51 31
350	280	50	42 045 51 35
400	280	50	42 045 51 40



### DOUBLE-WALLED VENT, INSULATED, PVC COATED, WITH ALUMINUM TOP COVER

Type	Height above roof (mm)	Spigot length (mm)	Article number
200	235	50	42 047 51 20
250	280	50	42 047 51 25
315	280	50	42 047 51 31
350	280	50	42 047 51 35
400	280	50	42 047 51 40



### SINGLE-WALLED VENT WITH ALUMINUM TOP COVER

Type	Total height (mm)	Article number
200	235	42 045 50 20
250	280	42 045 50 25
315	280	42 045 50 31
350	280	42 045 50 35
400	280	42 045 50 40



### SINGLE-WALLED VENT WITH ALUMINUM TOP COVER, PVC COATED

Type	Total height (mm)	Article number
200	235	42 047 50 20
250	280	42 047 50 25
315	280	42 047 50 31
350	280	42 047 50 35
400	280	42 047 50 40





## VENTS ALUMINIUM WELDED

### DOUBLE-WALLED VENT

Type	Height above roof (excluding top) (mm)	Spigot length (mm)	Article number
180	500	300	42 046 01 18
200	500	300	42 046 01 20
250	500	300	42 046 01 25
300	500	300	42 046 01 30
350	500	300	42 046 01 35
400	500	300	42 046 01 40
450	500	300	42 046 01 45
500	500	300	42 046 01 50
550	500	300	42 046 01 55
600	500	300	42 046 01 60

Also available with PVC coating.



### SINGLE-WALLED VENT

Type	Height above roof (excluding top) (mm)	Article number
180	500	42 046 00 18
200	500	42 046 00 20
250	500	42 046 00 25
300	500	42 046 00 30
350	500	42 046 00 35
400	500	42 046 00 40
450	500	42 046 00 45
500	500	42 046 00 50
550	500	42 046 00 55
600	500	42 046 00 60







MAKING SYSTEMS WORK

---



## CABLE ENTRIES

Double-walled cable entries

Single-walled cable entries



**Burgerhout**<sup>®</sup>

a brand of M&G Group

## DOUBLE-WALLED CABLE ENTRIES

### A COMPLETE SERIES OF CONNECTIONS FOR CABLES AND PIPES!

The double-walled cable entry is the most complete and innovative cable entry for the flat roof. The cable entry is resealable, ideal for installation prior to the installation of cables and pipes of heat pumps and/or solar panels. The supplied barrier ensures stagnant air, separate cable routing and prevents entry by vermin.

The adhesive plates are available in a double-walled and PVC-coated version. In addition, the series is also available as a prefab model with an integrated roundel roof covering.

The double-walled insulated adhesive panels are equipped with flame-retardant and flame-extinguishing EPS insulation.

The entire series of cable entries is constructed from reusable metals and plastics, can be completely dismantled and all parts are fully recyclable.



**DOUBLE-WALLED CABLE ENTRY, INSULATED**

Type	Ø Internal (mm)	Height above roof (mm)	Spigot length (mm)	Article number
60	60	250	50	42 046 09 06
100	100	255	55	42 046 09 10

**DOUBLE-WALLED CABLE ENTRY, INSULATED, PVC COATED**

Type	Ø Internal (mm)	Height above roof (mm)	Spigot length (mm)	Article number
60	60	250	50	42 047 09 06
100	100	255	55	42 047 09 10

**DOUBLE-WALLED PREFAB CABLE ENTRY, INSULATED, RESITRIX SK W**

Type	Ø Internal (mm)	Height above roof (mm)	Spigot length (mm)	Article number
60	60	250	50	42 042 68 06
100	100	255	55	42 042 68 10

**DOUBLE-WALLED PREFAB CABLE ENTRY, INSULATED, BITUMEN SBS**

Type	Ø Internal (mm)	Height above roof (mm)	Spigot length (mm)	Article number
60	60	250	50	42 042 78 06
100	100	255	55	42 042 78 10

**DOUBLE-WALLED PREFAB CABLE ENTRY, INSULATED, EPDM SA FLASHING USA**

Type	Ø Internal (mm)	Height above roof (mm)	Spigot length (mm)	Article number
60	60	250	50	42 042 88 06
100	100	255	55	42 042 88 10



## SINGLE-WALLED CABLE ENTRIES

### SINGLE-WALLED CABLE ENTRY WITH PP BENDS

Type	Height (mm)	Ø (mm)	Article number
50	305	50	42 046 07 50
75	325	75	42 046 07 75
110	380	110	42 046 07 11
125	380	125	42 046 07 12
160	400	160	42 046 07 16



### SINGLE-WALLED CABLE ENTRY WITH PP BENDS, PVC COATED

Type	Height (mm)	Ø (mm)	Article number
50	305	50	42 047 07 50
75	325	75	42 047 07 75
110	380	110	42 047 07 11
125	380	125	42 047 07 12
160	400	160	42 047 07 16



**CABLE ENTRY ALUMINIUM SINGLE**

Type	Height (mm)	W x D (mm)	Article number
120 x 120 250		120 x 120	42 046 09 12

Also available with PVC coating.

**CABLE ENTRY ALUMINIUM DOUBLE**

Type	Height (mm)	W x D (mm)	Article number
120 x 120 250		120 x 120	42 046 09 24

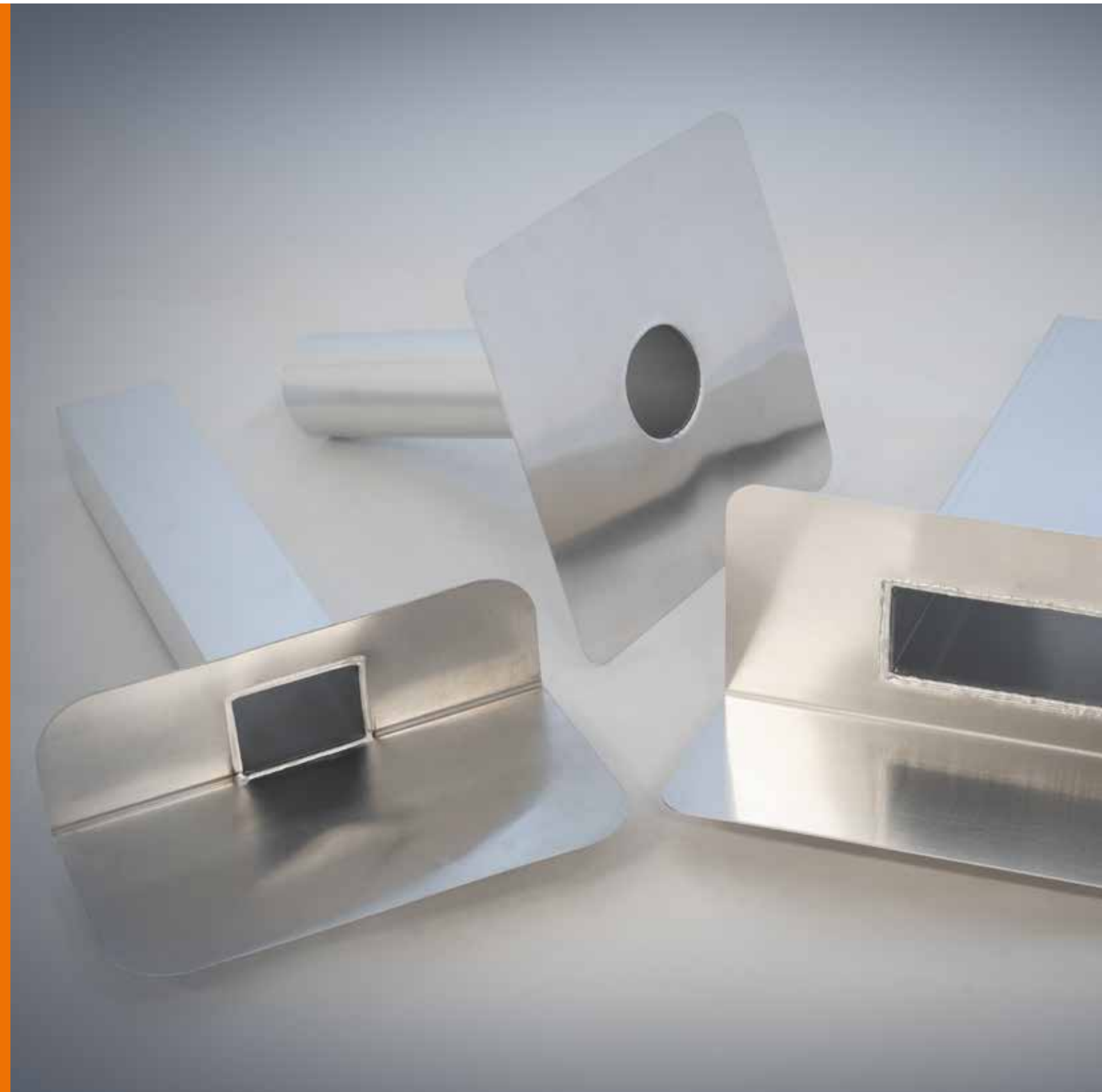
Also available with PVC coating.

**CABLE ENTRY ALUMINIUM WIDE**

Type	Height (mm)	W x D (mm)	Article number
125 x 250 250		125 x 250	42 046 09 25

Also available with PVC coating.





MAKING SYSTEMS WORK

---



## ROOF DRAINAGE

Gully outlets aluminium

Offset outlets

Leaf guards

Roof outlet aluminium

Roof outlet aluminium with sleeve

Roof outlet aluminium forced

Emergency overflows aluminium



**Burgerhout**<sup>®</sup>

a brand of M&G Group

## GULLY OUTLETS ALUMINIUM

### A COMPLETE SERIES FOR DRAINAGE OF RAINWATER!

The aluminium gully outlets and roof outlets are universally applicable for rainwater drainage, both for new construction and renovation work. The unique offset outlet with EPDM collar ensures a watertight connection with the gully outlet. The plastic tile leaf catcher, with a circumference of over 1.2 meters, guarantees optimal flow of rainwater. Can be used with all gully outlets and roof outlets; a universal solution!

Aluminum emergency overflows are available in any size. The rainwater drains are also available as a PVC-coated or blasted version. If desired, the outlets of the emergency overflows can be provided with a RAL color.

#### GULLY OUTLET 45°

Type	H x W (mm)	Length outlet (mm)	Article number
60 x 80	57 x 78	200	42 045 72 58
60 x 100	57 x 95	200	42 045 72 51
60 x 80	57 x 78	330	42 045 73 58
60 x 100	57 x 95	330	42 045 73 51
60 x 80	57 x 78	450	42 045 74 58
60 x 100	57 x 95	450	42 045 74 51
60 x 80	57 x 78	500	42 045 75 58
60 x 100	57 x 95	500	42 045 75 51
60 x 80	57 x 78	600	42 045 76 58
60 x 100	57 x 95	600	42 045 76 51



#### GULLY OUTLET 45°, BLASTED

Type	H x W (mm)	Length outlet (mm)	Article number
60 x 80	57 x 78	330	42 046 73 58
60 x 100	57 x 95	330	42 046 73 51
60 x 80	57 x 78	450	42 046 74 58
60 x 100	57 x 95	450	42 046 74 51



**GULLY OUTLET 45°, PVC COATED**

Type	H x W (mm)	Length outlet (mm)	Article number
60 x 80	57 x 78	330	42 047 73 58
60 x 100	57 x 95	330	42 047 73 51
60 x 80	57 x 78	450	42 047 74 58
60 x 100	57 x 95	450	42 047 74 51

**GULLY OUTLET 90°**

Type	H x W (mm)	Length outlet (mm)	Article number
60 x 80	57 x 78	200	42 045 72 68
60 x 100	57 x 95	200	42 045 72 61
60 x 80	57 x 78	330	42 045 73 68
60 x 100	57 x 95	330	42 045 73 61
60 x 80	57 x 78	450	42 045 74 68
60 x 100	57 x 95	450	42 045 74 61
60 x 80	57 x 78	500	42 045 75 68
60 x 100	57 x 95	500	42 045 75 61
60 x 80	57 x 78	600	42 045 76 68
60 x 100	57 x 95	600	42 045 76 61

**GULLY OUTLET 90°, BLASTED**

Type	H x W (mm)	Length outlet (mm)	Article number
60 x 80	57 x 78	330	42 046 73 68
60 x 100	57 x 95	330	42 046 73 61
60 x 80	57 x 78	450	42 046 74 68
60 x 100	57 x 95	450	42 046 74 61

**GULLY OUTLET 90°, PVC COATED**

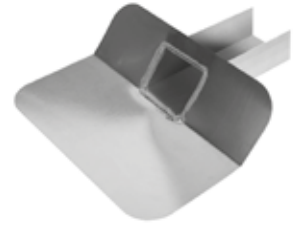
Type	H x W (mm)	Length outlet (mm)	Article number
60 x 80	57 x 78	330	42 047 73 68
60 x 100	57 x 95	330	42 047 73 61
60 x 80	57 x 78	450	42 047 74 68
60 x 100	57 x 95	450	42 047 74 61



## GULLY OUTLETS ALUMINIUM

### GULLY OUTLET 45° OPEN

Type	W x B (mm)	Length outlet (mm)	Article number
60 x 80	57 x 78	200	42 045 71 08
60 x 100	57 x 95	200	42 045 71 01



### GULLY OUTLET 45° OPEN WITH LEAF GUARD PE

Type	W x B (mm)	Length outlet (mm)	Article number
60 x 80	57 x 78	200	42 045 71 48
60 x 100	57 x 95	200	42 045 71 41



### GULLY OUTLET WITH ROUND SPOUT 45°, INCLUDING PVC GUTTER TRAP

Type	Ø (mm)	Length outlet (mm)	Article number
80	75	100	42 045 75 80



### GULLY OUTLET WITH ROUND SPOUT 90° INNER, INCLUDING PVC GUTTER TRAP

Type	Ø (mm)	Length outlet (mm)	Article number
80	75	100	42 045 79 80



### GUTTER TRAP PVC

Type	Ø (mm)	Article number
80	80	42 046 10 19





## OFFSET OUTLETS FOR GULLY OUTLET

### OFFSET OUTLET PP WITH EPDM-COLLAR

Type	H x W (mm)	Length (mm)	Ø Connection (mm)	Article number
70-80	57 x 78	195	75	42 045 70 80
80-100	57 x 95	195	95	42 045 71 00



### OFFSET OUTLET ALUMINIUM WITH EPDM-COLLAR

Type	H x W (mm)	Length (mm)	Ø Connection (mm)	Article number
70	57 x 78	190	66	42 045 78 70
80	57 x 78	190	75	42 045 78 80
80	57 x 95	200	75	42 045 78 10
100	57 x 95	200	95	42 045 71 10



## LEAF GUARDS

### TILE LEAF GUARD PP

Type	L x W (mm)	Total height (mm)	Article number
45°/90°	310 x 310	65	42 045 74 00

Also available in bulk packaging



### LEAF GUARD PE

Type	H x W (mm)	Total length (mm)	Article number
60x80	55 x 75	225	40 046 10 10
60x100	55 x 90	225	40 046 10 13



## ROOF OUTLETS ALUMINIUM

### ROOF OUTLET, LENGTH 330 MM

Type	Ø Outlet (mm)	Length outlet (mm)	Remark	Article number
70	66	330	Fits in PVC	42 045 73 70
80	75	330	Fits in PVC	42 045 73 80
90	90	330		42 045 73 90
100	95	330	Fits in PVC	42 045 73 10
110	110	330		42 045 73 13



### ROOF OUTLET, LENGTH 330 MM, BLASTED

Type	Ø Outlet (mm)	Length outlet (mm)	Remark	Article number
70	66	330	Fits in PVC	42 046 73 70
80	75	330	Fits in PVC	42 046 73 80
100	95	330	Fits in PVC	42 046 73 10



### ROOF OUTLET, LENGTH 330 MM, WITH PVC-COATING

Type	Ø Outlet (mm)	Length outlet (mm)	Remark	Article number
70	66	330	Fits in PVC	42 047 73 70
80	75	330	Fits in PVC	42 047 73 80
100	95	330	Fits in PVC	42 047 73 10



### ROOF OUTLET, LENGTH 450 MM

Type	Ø Outlet (mm)	Length outlet (mm)	Remark	Article number
70	66	450	Fits in PVC	42 045 74 70
80	75	450	Fits in PVC	42 045 74 80
90	90	450		42 045 74 90
100	95	450	Fits in PVC	42 045 74 10
110	110	450		42 045 74 13



## ROOF DRAINAGE

**ROOF OUTLETS ALUMINIUM WITH SLEEVE****ROOF OUTLET, LENGTH 330 MM**

Type	Ø Outlet (mm)	Length outlet (mm)	Article number
50-60	45	330	42 045 73 05
70-80	66	330	42 045 73 07
90-100	86	330	42 045 73 09
110-125	105	330	42 045 73 11
150-160	145	330	42 045 73 15

**ROOF OUTLET, LENGTH 450 MM**

Type	Ø Outlet (mm)	Length outlet (mm)	Article number
50-60	45	450	42 045 74 05
70-80	66	450	42 045 74 07
90-100	86	450	42 045 74 09
110-125	105	450	42 045 74 11
150-160	145	450	42 045 74 15

**ROOF OUTLET ALUMINIUM FORCED****ROOF OUTLET WITH GUTTER TRAP PVC**

Type	Ø Outlet (mm)	Length outlet (mm)	Article number
70	70	80	42 046 10 01
80	80	80	42 046 10 04
100	100	80	42 046 10 07

**GUTTER TRAP PVC**

Type	Article number
70-80	42 046 10 16
100	42 046 10 22

**ROOF OUTLET FITS IN PVC**

Type	Ø Outlet (mm)	Length outlet (mm)	Article number
70	70	150	42 045 77 70
80	80	150	42 045 77 80
100	100	150	42 045 77 10



## ROOF DRAINAGE

**EMERGENCY OVERFLOWS ALUMINIUM****EMERGENCY OVERFLOW 90° ALUMINIUM**

Type	H x W (mm)	Length outlet (mm)	Article number
60 x 200 x 300	60 x 200	330	42 096 23 90
100 x 200 x300	100 x200	330	42 091 23 90
60 x 200 x 450	60 x 200	450	42 096 24 90
100 x 200 x450	100 x200	450	42 091 24 90
60 x 300 x 330	60 x 300	330	42 096 33 90
80 x 300 x 330	80 x 300	330	42 098 33 90
100 x 300 x330	100 x300	330	42 091 33 90
60 x 300 x 450	60 x 300	450	42 096 34 90
80 x 300 x 450	80 x 300	450	42 098 34 90
100 x 300 x450	100 x300	450	42 091 34 90
100 x 400 x330	100 x400	330	42 091 43 90
100 x 400 x450	100 x400	450	42 091 44 90

Other dimensions available on request. Also available with PVC coating





MAKING SYSTEMS WORK

---



# WIND-DRIVEN FANS

Vent-Alu Rotor PP fans

Turbine fans

Savonius fans

Aspirotor fans



**Burgerhout**<sup>®</sup>

a brand of M&G Group

## VENT-ALU ROTOR PP FANS

### A UNIQUE WIND DRIVEN FAN!

The Vent-Alu Rotor PP is easily interchangeable with the Vent-Alu 3000 top hood, which increases the ventilation capacity. The fan is extremely light and is equipped with two closed bearings. The fan runs at low wind speeds so that air extraction takes place at all times.

The Vent-Alu Rotor PP is made of fibre reinforced PP and is equipped with a stainless steel shaft. The fan can be completely dismantled and all parts are fully recyclable.



**VENT-ALU ROTOR PP**

Type	Material	Height (mm)	Article number
90-100	Reinforced PP	260	42 045 84 09
110-125	Reinforced PP	260	42 045 84 11
150-160	Reinforced PP	260	42 045 84 15

**VENT-ALU ROTOR PP WITH DOUBLE WALLED ADHESIVE FLASHING**

Type	Height above roof (mm)	Ø Spigot (mm)	Length Spigot (mm)	Article number
90-100	370	84-96	50	42 045 94 09
110-125	370	104-118	55	42 045 94 11
150-160	370	142-152	50	42 045 94 15



## WIND-DRIVEN FANS

### TURBINE FAN

Type	Material	Ø Connection (mm)	Height (mm)	Article number
100	Aluminium	100	310	42 045 85 10
125	Aluminium	125	360	42 045 85 12
150	Galvanized	150	360	42 045 85 15
200	Galvanized	200	380	42 045 85 20
250	Galvanized	250	420	42 045 85 25
300	Galvanized	300	430	42 045 85 30
350	Galvanized	350	510	42 045 85 35
450	Galvanized	450	620	42 045 85 45



### SAVONIUS FAN

Type	Material	Ø Connection (mm)	Height (mm)	Article number
100	Aluminium	100	250	42 045 86 10
125	Aluminium	125	250	42 045 86 12
150	Aluminium	150	340	42 045 86 15



### ASPIROTOR FAN

Type	Material	Ø Connection (mm)	Height (mm)	Article number
125	SST	115-180	300	42 045 87 15
150	SST	175-235	315	42 045 87 20



**SINGLE-WALLED ADHESIVE FLASHING FOR SAVONIUS AND TURBINE**

Type	Height (mm)	Ø Top connection (mm)	Article number
100	145	99	42 045 52 10
125	150	124	42 045 52 12
150	145	150	42 045 52 15
200	160	200	42 045 42 20
250	160	300	42 045 42 25
300	150	250	42 045 42 30
350	160	350	42 045 42 35

**DOUBLE-WALLED ADHESIVE FLASHING FOR SAVONIUS AND TURBINE**

Type	Ø Spigot (mm)	Height above roof (mm)	Ø Top connection (mm)	Article number
100	100	145	99	42 045 53 10
125	125	150	124	42 045 53 12
150	150	145	150	42 045 53 15
200	200	160	200	42 045 43 20
250	250	160	300	42 045 43 25
300	300	150	250	42 045 43 30
350	350	160	348	42 045 43 35

**SINGLE-WALLED ADHESIVE FLASHING, WELDED, FOR TURBINE**

Type	Height (mm)	Ø Top connection (mm)	Article number
450	250	450	42 046 02 45





# FLUE GAS RENOVATION KITS

Non-condensing renovation kits

Condensing renovation kits

Conventional renovation kits



**Burgerhout**<sup>®</sup>

a brand of M&G Group

## RENOVATION KITS

### A UNIQUE SOLUTION FOR RENOVATION WORK ON A FLAT ROOF!

The flue gas renovation kits make it possible to replace an existing flue gas terminal above the roof with a new one, without having to enter the home.

If a roof is fitted with a (thicker) insulation package, the existing flue gas terminals can easily be replaced by using these renovation sets.

#### NON-CONDENSING RENOVATION KIT 80

Type	Ø Flue gas (mm)	Material inner pipe	Height (mm)	Article number
80	80	Aluminium	580	42 046 28 08



#### CONDENSING RENOVATION KIT 80

Type	Ø Flue gas (mm)	Material inner pipe	Height (mm)	Article number
80	80	Aluminium	670	42 046 29 08



#### CONDENSING RENOVATION KIT 100

Type	Ø Flue gas (mm)	Material inner pipe	Height (mm)	Article number
100	100	Aluminium	780	42 046 29 10



## FLUE GAS RENOVATION KITS

## CONVENTIONAL RENOVATION KITS ALUMINIUM

### CONVENTIONAL RENOVATION KIT WITH HOOD, ALUMINIUM

Type	Ø Flue gas (mm)	Height (mm)	Article number
100	100	824	42 046 26 10
110	110	910	42 046 26 11
130	130	973	42 046 26 13
150	150	1.137	42 046 26 15
180	180	1.118	42 046 26 18
200	200	1.163	42 046 26 20
250	250	1055	42 046 26 25



### CONVENTIONAL RENOVATION KIT WITHOUT HOOD, ALUMINIUM

Type	Ø Flue gas (mm)	Height (mm)	Article number
100	100	610	42 046 27 10
110	110	610	42 046 27 11
130	130	615	42 046 27 13
150	150	640	42 046 27 15
180	180	615	42 046 27 18
200	200	615	42 046 27 20
250	250	620	42 046 27 25



### CHIMNEY CAP NELSON ALUMINIUM\*

Type	Ø Flue gas (mm)	Height (mm)	Article number
80	80	294	40 045 23 49
100	100	319	40 045 23 55
110	110	405	40 045 23 58
130	130	463	40 045 23 64
150	150	602	40 045 23 67
180	180	633	40 045 23 70
200	200	678	40 045 23 73
250	250	620	40 045 24 06



\*Only applicable for non-condensing boilers up to a maximum of 200°C



# MECHANICAL VENTILATION

Vent-Alu 3000 ventilation roof terminals

Megavent ventilation roof terminals

Ventilation roof terminals PP

Ventilation roof terminals metal

Insulated roof terminals

DDVI hood

Deflector hood



**Burgerhout®**

a brand of M&G Group

## VENT-ALU 3000 VENTILATION ROOF TERMINALS

### A COMPLETE SERIES FOR RESIDENTIAL AND UTILITY!

The Vent-Alu 3000 Mechanical ventilation terminal has been developed for extractor hoods, with or without non-return valve. The Deflector Covers and DDVI hoods have been developed for utility applications and industry where a lot of air is extracted mechanically.

#### VENT-ALU 3000 VENTILATION ROOF TERMINAL PP 150

Type	Version	Total length (mm)	Height above roof (mm)	Article number
150	Mechanical ventilation	760	350	42 046 20 14
150	Mechanical ventilation with non-return valve	760	350	42 046 20 16

#### ACCESSORIES

Type	Product	Article number
125-150	Aluminium adapter 125 - 150 mm	42 046 20 32
173	Double-walled adhesive flashing for 150 mm	42 045 53 17
173	Single-walled adhesive flashing for 150 mm	40 045 31 86
150	Adjustable collar for lead tile including adapter for type 150	42 046 20 31



### ACCESSORIES



Double-walled adhesive flashing



Adjustable adhesive flashing



Single-walled adhesive flashing

# MEGAVENT VENTILATION ROOF TERMINAL

## MEGAVENT PP VENTILATION ROOF TERMINAL

Type	Total length (mm)	Height above roof (mm)	Article number
125	950	385	40 045 31 02

## ACCESSORIES

Type	Product	Article number
139	FX Easy Pitched roof flashing + adjustable collar 140 black, 15° - 60°	40 047 20 07
138	Adhesive flashing	40 045 31 71
138	Adhesive flashing with PVC	42 047 31 71
140	Adjustable adhesive flashing 0° - 15°	40 045 32 28
139	Adjustable collar F140 for lead tile black, 25° - 45°	40 045 37 17



FX Easy Pitched roof flashing + adjustable collar (Leadax)



Adjustable collar

## VENTILATION ROOF TERMINALS PP

### VENTILATION ROOF TERMINAL PP 150

Type	Total length (mm)	Height above roof (mm)	Ø (mm)	Article number
150	1309	527	150	40 045 31 18

#### ACCESSORIES

Type	Product	Article number
160	FX Easy collar 160 black	40 047 20 32
FX	FX Easy Pitched roof flashing (Leadax) black	40 047 20 01
160	Collar PP black F160 for lead tile	40 045 37 26
160	Adhesive flashing 160 mm	40 045 31 82
160	Adhesive flashing 160 mm with PVC	40 047 31 82



### VENTILATION ROOF TERMINAL PP 100

Type	Total length (mm)	Height above roof (mm)	Ø (mm)	Article number
100	960	310	100	40 045 31 18

#### ACCESSORIES

Type	Product	Article number
120	FX Easy collar 120 black	40 047 20 24
FX	FX Easy Pitched roof flashing (Leadax) black	40 047 20 01
120	Collar PP black F120 for lead tile	40 045 37 08
120	Adhesive flashing 119 mm	40 045 31 55
120	Adjustable adhesive flashing 0° - 15° 119 mm	40 045 32 31



### SOIL VENT PP

Type	Article number
110	40 045 30 90

#### ACCESSORIES

Type	Product	Article number
128	FX Easy collar 128-132 black	40 047 20 26
FX	FX Easy Pitched roof flashing (Leadax) black	40 047 20 01
128	Collar PP black F128-132 for lead tile	40 045 37 14
123	Adhesive flashing 123 mm	40 045 31 56



## VENTILATION ROOF TERMINALS METAL

### DOUBLE-WALLED ALUMINIUM ROOF TERMINAL BLACK

Ø (mm)	Length(mm)	Article number
100	1000	40 045 26 66
110	1000	40 045 26 67
125	1000	40 045 26 70
150	1000	40 045 26 73
180	1000	40 045 26 75
200	1000	40 045 26 78



### SINGLE-WALLED GALVANISED ROOF TERMINAL BLACK

Ø (mm)	Length (mm)	Article number
250	1160	40 045 26 81
300	1160	40 045 26 84
350	1180	40 045 26 87
400	1190	40 045 26 90

\*Suitable roof flashing (lead) available on request.



### ROOF BOARDING BRACKETS

Ø (mm)	Colour	To suit Ø (mm)	Article number
101	Blank	100	40 045 34 05
111	Blank	110	40 045 34 11
126	Blank	125	40 045 34 17
151	Blank	150	40 045 34 26
181	Blank	180	40 045 34 32
201	Blank	200	40 045 34 38
251	Blank	250	40 045 34 44
301	Blank	300	40 045 34 50
351	Blank	350	40 045 34 56

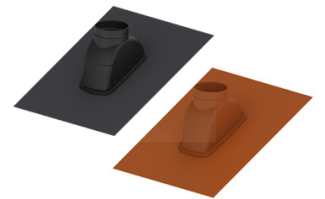


**ROOF FLASHING****FX EASY PITCHED ROOF FLASHING (LEADAX) + COLLAR**

Type	Colour	Roof angle	To suit Ø (mm)	Article number
FX120	Black	15° - 60°	100	40 047 20 04
FX120	Terracotta	15° - 60°	100	40 047 20 05
FX128-132	Black	15° - 60°	100	40 047 20 11
FX128-132	Terracotta	15° - 60°	100	40 047 20 12
FX140	Black	15° - 60°	125	40 047 20 07
FX140	Terracotta	15° - 60°	125	40 047 20 08
FX170	Black	15° - 60°	150	40 047 20 13
FX170	Terracotta	15° - 60°	150	40 047 20 14

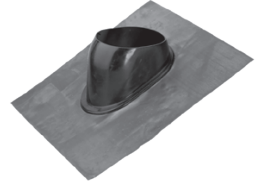
**DX PITCHED ROOF FLASHING (LEADAX) + COLLAR**

Type	Colour	Roof angle	To suit Ø (mm)	Article number
DX205	Black	25° - 55°	180	40 045 40 32
DX205	Terracotta	25° - 55°	180	40 045 40 33
DX210	Black	25° - 55°	200	40 045 40 34
DX210	Terracotta	25° - 55°	200	40 045 40 35



**PITCHED ROOF FLASHING MODEL F (LEAD)**

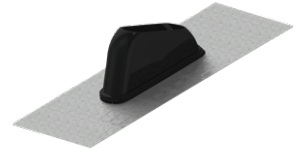
Colour	Dimensions (mm)	Article number
Basic	500 x 500	40 045 35 47
Black	500 x 500	40 045 35 46

**COLLAR MODEL F**

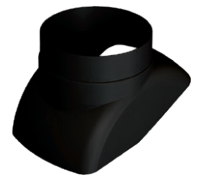
Type	Colour	Roof angle	To suit Ø (mm)	Article number
F120	Black	25° - 45°	100	40 045 37 08
F128-132	Black	25° - 45°	100	40 045 37 14
F140	Black	25° - 45°	125	40 045 37 17
F170	Black	25° - 45°	150	40 045 37 32

**PITCHED ROOF FLASHING MODEL D (LEAD)**

Colour	Dimensions (mm)	Article number
Basic	800 x 1000	40 045 40 40

**COLLAR MODEL D**

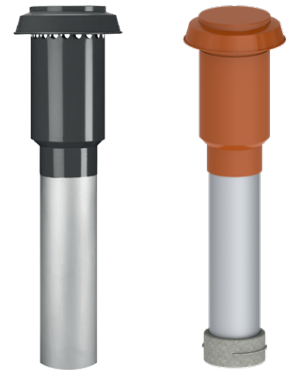
Type	Colour	Roof angle	To suit Ø (mm)	Article number
D205	Black	25° - 55°	180	40 045 37 42
D210	Black	25° - 55°	200	40 045 37 47



## INSULATED ROOF TERMINALS

### ROOF TERMINAL ALUMINIUM WITH EPS INSULATION

Ø Inside (mm)	Colour	Length (mm)	Article number
125	Black	1000	40 048 04 51
125	Terracotta	1000	40 048 04 53
130	Black	1000	40 045 27 10
150	Black	1000	40 045 27 12
150	Black	1750	40 045 27 18
150	Terracotta	1000	40 045 27 14
160	Black	1000	40 048 06 00
160	Terracotta	1000	40 048 06 01
180	Black	1000	40 045 27 36
180	Black	1675	40 045 27 38
180	Terracotta	1000	40 045 27 37



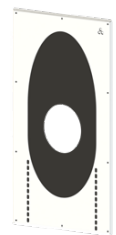
### ROOF BOARDING BRACKET

Ø (mm)	Colour	To suit Ø (mm)	Article number
151	Blank	125, 130	40 045 34 26
181	Blank	150	40 045 34 32
201	Blank	160, 180	40 045 34 38



### AIRTIGHT ROOF/SEALING PLATE METAL (WHITE)

Ø (mm)	Roof Angle	Article number
125, 150	0° - 30°	40 045 34 67
125, 150	30° - 60°	40 045 34 68
150, 160, 180	0° - 30°	40 045 34 69
150, 160, 180	30° - 60°	40 045 34 70



### ADHESIVE FLASHING

Ø (mm)	To suit Ø (mm)	Article number
160	125, 130	40 045 31 82
204	150, 160, 180	40 045 32 10

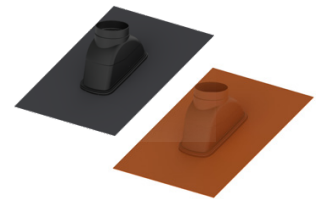


**FX EASY PITCHED ROOF FLASHING (LEADAX) + COLLAR**

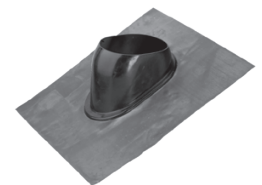
Type	Colour	Roof angle	To suit Ø (mm)	Article number
FX160	Black	15° - 60°	125, 130	40 047 20 15
FX160	Terracotta	15° - 60°	125, 130	40 047 20 16

**DX PITCHED ROOF FLASHING (LEADAX) + COLLAR**

Type	Colour	Roof angle	To suit Ø (mm)	Article number
DX205	Black	25° - 45°	150	40 045 40 32
DX205	Terracotta	25° - 45°	150	40 045 40 33
DX210	Black	25° - 45°	160, 180	40 045 40 34
DX210	Terracotta	25° - 45°	160, 180	40 045 40 35

**PITCHED ROOF FLASHING MODEL F (LEAD)**

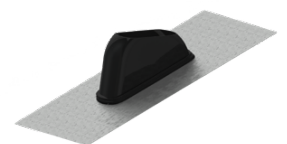
Colour	Dimensions (mm)	Article number
Lead	500 x 500	40 045 35 47
Completely black	500 x 500	40 045 35 46

**COLLAR MODEL F**

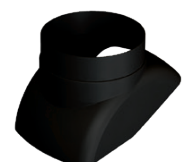
Type	Colour	Roof angle	To suit Ø (mm)	Article number
F160	Black	25° - 45°	125, 130	40 045 37 26

**PITCHED ROOF FLASHING MODEL D (LEAD)**

Colour	Dimensions (mm)	Article number
Lead	800 x 1000	40 045 40 40

**COLLAR MODEL D**

Type	Colour	Roof angle	To suit Ø (mm)	Article number
D205	Black	25° - 55°	150	40 045 37 42
D210	Black	25° - 55°	160, 180	40 045 37 47



## DDVI HOOD

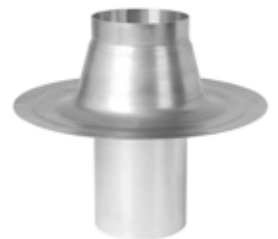
### DDVI HOOD

Type	Ø Connection (mm)	Height (mm)	Article number
150	150	760	42 046 21 15
200	200	750	42 046 21 20
250	250	810	42 046 21 25
315	315	830	42 046 21 31
350	350	810	42 046 21 35
400	400	1200	42 046 21 40



### ADHESIVE FLASHING FOR DDVI HOOD

Type	Ø Connection (mm)	Height above roof (mm)	Article number
150	150	145	42 046 22 15
200	200	160	42 046 22 20
250	250	160	42 046 22 25
315	315	160	42 046 22 31
350	350	160	42 046 22 35
400	400	160	42 046 22 40



## DEFLECTOR HOOD

### DEFLECTOR HOOD WITH GRILL

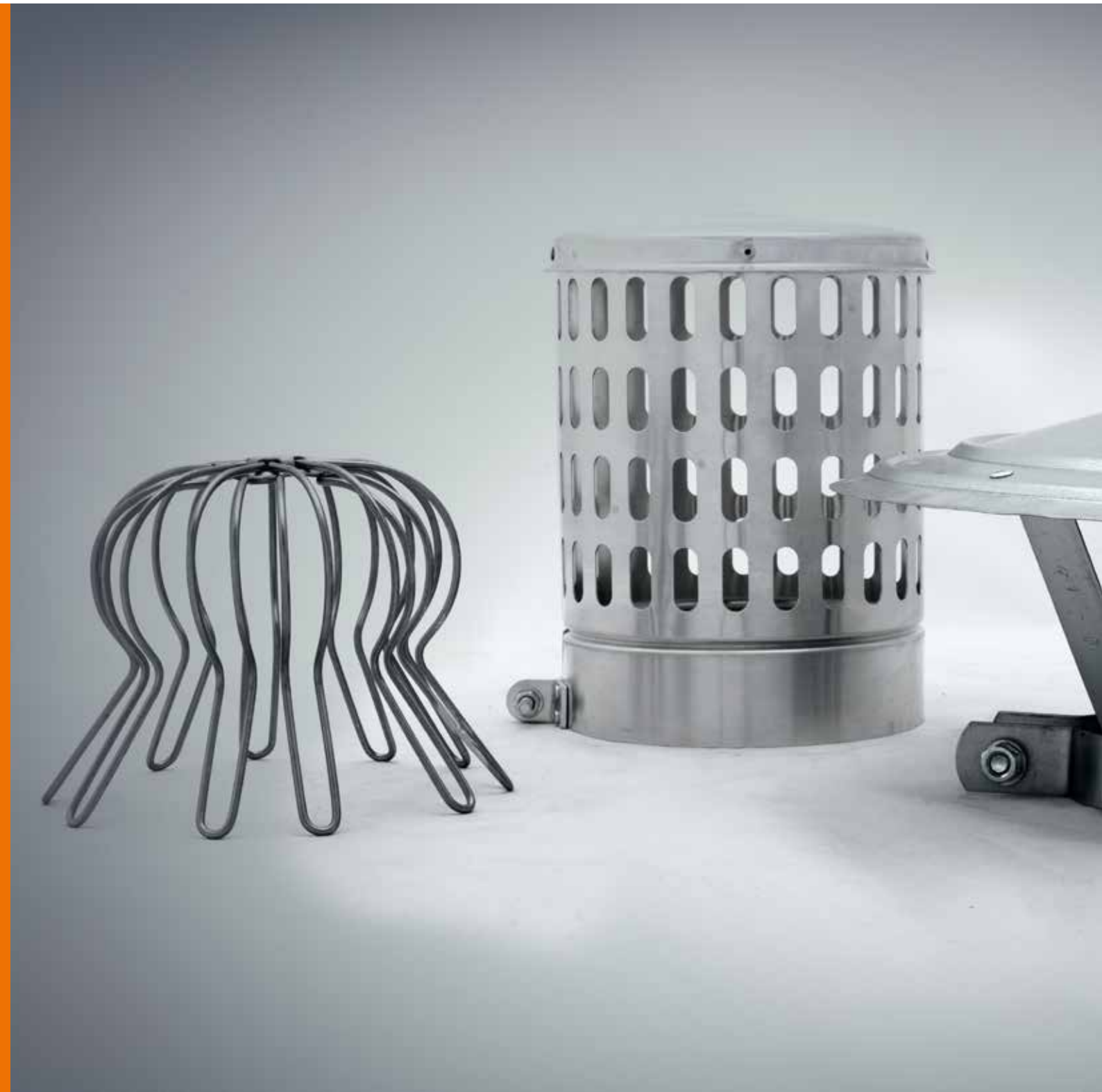
Type	Ø Connection (mm)	Height (mm)	Article number
150	153	550	42 046 23 15
180	183	550	42 046 23 18
200	203	550	42 046 23 20
250	253	695	42 046 23 25
300	303	695	42 046 23 30
350	353	695	42 046 23 35
400	403	1040	42 046 23 40
450	453	1040	42 046 23 45
500	503	1280	42 046 23 50
550	553	1380	42 046 23 55
600	603	1480	42 046 23 60



### ADHESIVE FLASHING FOR DEFLECTOR HOOD

Type	Ø Connection (mm)	Article number
150	148	42 046 24 15
180	178	42 046 24 18
200	198	42 046 24 20
250	248	42 046 24 25
300	298	42 046 24 30
350	348	42 046 24 35
400	398	42 046 24 40
450	448	42 046 24 45
500	498	42 046 24 50
550	548	42 046 24 55
600	598	42 046 24 60





MAKING SYSTEMS WORK

---



## ADDITIONAL ROOFING PRODUCTS

Adhesive flashings

Rain covers

Gutter traps

Bird Guard



**Burgerhout**<sup>®</sup>

a brand of M&G Group

## ROOFING PRODUCTS

### THE PERFECT ADDITION TO THE COMPLETE ROOF RANGE FROM BURGERHOUT!

Products such as adhesive flashings, rain covers, bird guards or gutter traps are regularly used on the roof. To complete the range, these products are available from stock.

#### ADHESIVE FLASHING ALUMINIUM

Type	Ø Connection (mm)	Height (mm)	Article number
103	103	115	40 045 31 50
113	113	115	40 045 31 53
123	123	115	40 045 31 56
133	133	115	40 045 31 68
138	138	115	40 045 31 71
153	153	115	40 045 31 80
160	160	115	40 045 31 82
168	168	115	40 045 31 83
173	173	115	40 045 31 86
204	204	115	40 045 32 10
222	222	115	40 045 31 92
275	275	115	40 045 31 98



**RAIN COVER GALVANIZED, INCLUDING BRACKET**

Type	Ø (mm)	Height (mm)	Article number
92-98	92-98	130	40 045 09 51
105-111	105-111	150	40 045 09 54
110-120	110-120	150	40 045 09 57
125-131	125-131	160	40 045 09 60
135-139	135-139	165	40 045 09 63
148-154	148-154	170	40 045 09 66
155-160	155-160	170	40 045 09 69
170-180	170-180	170	40 045 09 72
200	200	170	40 045 09 75
220	220	180	40 045 09 78
250	250	190	40 045 09 81
300	300	250	40 045 09 84

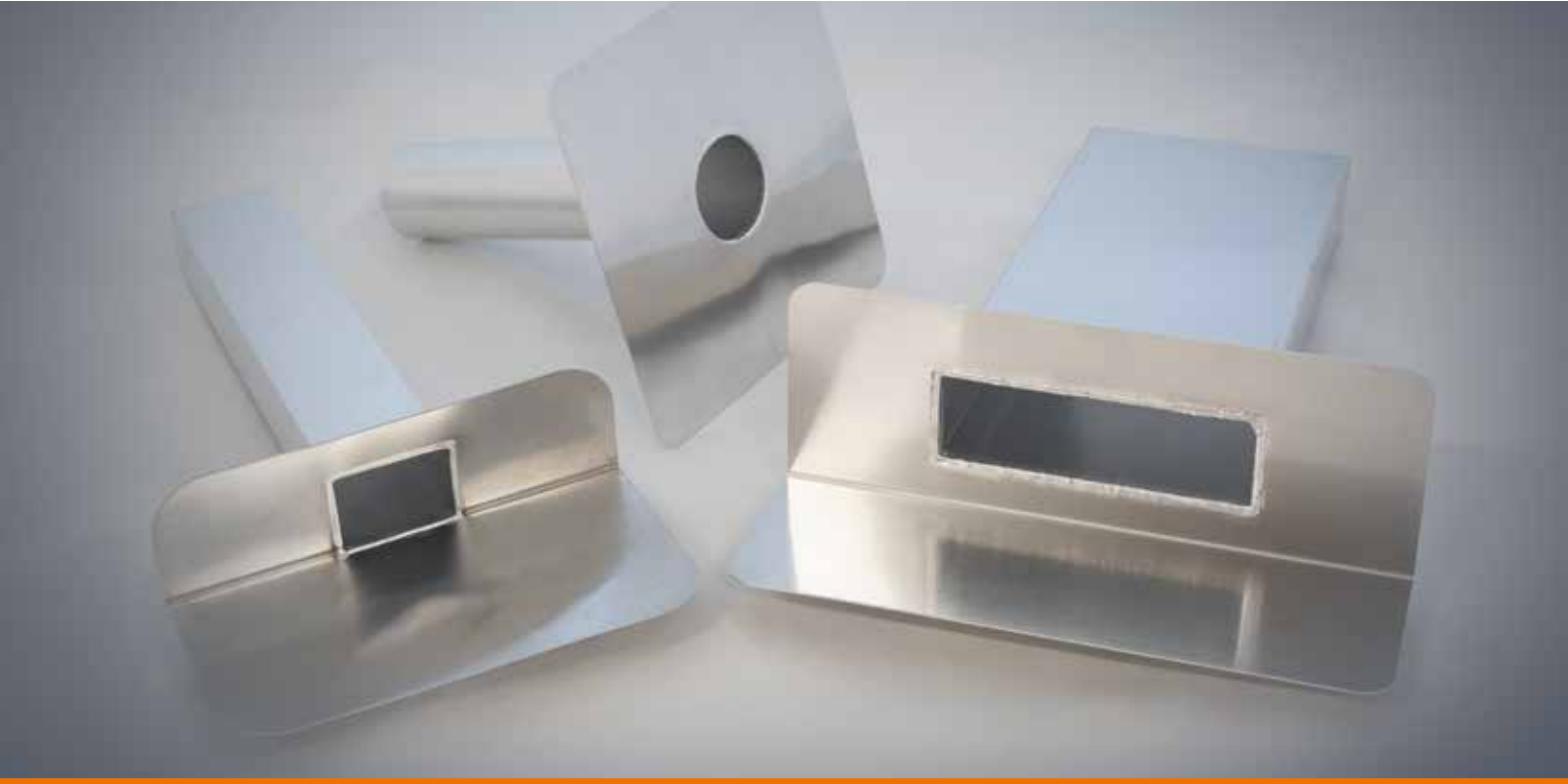
**GUTTER TRAP GALVANIZED**

Type	Ø (mm)	Article number
80	50-70	40 045 10 65
90	80-100	40 045 10 68
120	110-130	40 045 10 71
150	140-160	40 045 10 74

**BIRD GUARD ALUMINIUM**

Type	Ø (mm)	Height (mm)	Article number
120	120	165	40 045 05 58
140	140	210	40 045 05 61
150	150	210	40 045 05 64
160	160	210	40 045 05 67
180	180	250	40 045 05 70
200	200	250	40 045 05 73
250	250	250	40 045 05 76





MAKING CLIMATE SYSTEMS WORK TOGETHER

**M&G Group**

Burg. Grollemanweg 14  
9405 TN Assen  
The Netherlands  
T: +31 503 139 944  
E: info@mg-group.com

2024-02



**Burgerhout**<sup>®</sup>

a brand of M&G Group